

## HEATED MAKEUP AIR UNITS (MAU)

# Paint Booth and Building Makeup Air

Rohner Heated Makeup Air Units (MAU's) integrate seamlessly with Rohner Paint Spray Booths and can also be used as building makeup air for multiple booth and process applications or retrofitted to existing spray booths.



Rohner Heated Makeup Air Units and controls are specifically designed for the finishing industry and are constructed to offer years of trouble-free operation. Rohner MAU controls are selected to offer industry-specific process control. Rohner Heated MAU's use direct natural gas or propane-fired trough burners with 100% combustion efficiency and 92% overall thermal efficiency.

**Configurations:** Rohner Heated MAU's are easily configured to achieve any process requirement. Rohner MAU's are available in both vertical and horizontal arrangements with optional outdoor weather-proof construction. Standard Rohner MAU's supply 100% outside air and can be outfitted for reduced or recycled air for bake applications. Additional pre-filtration is available for maximum contaminant control. SRMI series units are Variable Air Volume (VAV) capable for use with automatic building pressure control. Rohner Deluxe MAU controls come with user programmable cycle, temperature and time parameters.

**Construction:** Rohner Heated MAU's are fabricated using heavy gauge aluminized steel housing with bolted construction and painted with a heat-resistant enamel finish. Rohner MAU's come pre-assembled in modular sections for easy field-installation.

**Components:** Rohner heated MAU's utilize centrifugal forward curved, double width, double inlet Class 1 fans with 200,000 hour lubricatable ball bearings. Each motor is an Energy Efficient (EE) T-Frame, open drip-proof, 1800 RPM prelubricated ball bearing type. Direct gas-fired line burner with spark ignited intermittent pilot provides inlet pressure from 6 oz. through 1 PSIG and up to 22:1 turndown ratio. Standard Rohner safety features include: hand-shut-off valve, an electric safety shut-off valve, electric flame safe-guard and high temperature limit.

### APPLICATIONS

Rohner Heated MAU's are an ideal choice for your finishing system makeup air needs. Heated MAU's can be configured for 100% O.A. spray, 90/10 recycle/bake or dedicated dry booth modes.

Rohner Heated MAU's offer constant controllable makeup air for individual or multiple booths or general building makeup air.

Rohner Heated MAU's are designed to ANSI Z83.18 standards, are ETL Listed and includes UL 508 Controls. FM approval available.

Tel: 360.885.7641

Fax: 360.896.5748

2650 NE Andresen Rd. #102

Vancouver, WA 98661

info@rohner-usa.com

[www.rohner-usa.com](http://www.rohner-usa.com)

### FEATURES

- ETL listed
- Natural gas or propane
  - Air deliveries from 2,000 to 120,000 SCFM
- Electronic modulating gas valve
- Heat input from 94 to 15,552 MBH
  - Temperature rise 70-150° F
    - Double centrifugal forward-curved class 1 fans
- Motorized electric safety shut-off valve
- UL listed remote controls enclosed in NEMA 12 cabinet
  - 1 year warranty



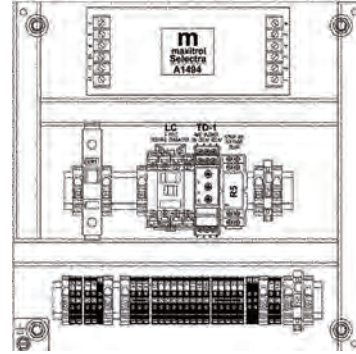
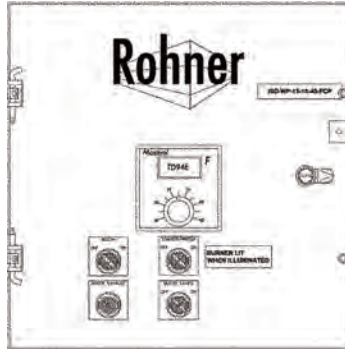
From performance to reliability and process control, Rohner Heated MAU's are designed to meet your most demanding finishing and refinishing requirements.

Model	Air Delivery SCFM	Outlet Velocity FPM	MBH Air Temperature Rise - Degrees F									Motor Horsepower External Static Pressure (ESP)				
			40	50	60	70	80	90	100	110	120	.25"	.5"	.75"	1"	
			L Series													
LRMI-215	7000	1741	NA	411	493	565	657	740	822	904	986	2	2	3	3	
	8000	1990	NA	470	563	657	751	845	939	1033	1127	3	3	3	5	
	9000	2239	NA	528	634	740	845	951	1057	1162	1268	3	5	5	5	
	10000	2488	NA	587	704	822	939	1057	1174	1291	1409	5	5	5	7 1/2	
	12000	2985	NA	704	845	986	1127	1268	1409	1550	1690	7 1/2	7 1/2	10	10	
LRMI-218	14000	2443	NA	822	986	1150	1315	1479	1643	1808	1972	7 1/2	7 1/2	7 1/2	7 1/2	
	16000	2792	NA	939	1127	1315	1503	1690	1878	2066	2254	7 1/2	10	10	10	
	18000	3141	NA	1057	1268	1479	1690	1902	2113	2325	2535	10	15	15	15	
	20000	3487	NA	1174	1409	1643	1878	2113	2345	2583	2690	15	15	15	NA	
	S Series															
SRMI-215	6000	1200	282	352	423	493	563	634	704	775	845	3	3	5	5	
	7000	1200	329	411	493	575	657	740	822	904	986	3	3	5	5	
	8000	1200	376	470	563	657	751	845	939	1033	1127	3	5	5	5	
	9000	1200	423	528	634	740	845	951	1057	1162	1268	5	5	5	7 1/2	
	10000	1225	470	587	704	822	939	1057	1174	1291	1409	5	5	7 1/2	7 1/2	
	12000	1230	563	704	845	986	1127	1268	1409	1550	1690	7 1/2	7 1/2	7 1/2	7 1/2	
	14000	1230	657	822	986	1150	1315	1479	1643	1808	1972	7 1/2	10	10	10	
	16000	1275	751	939	1127	1315	1503	1690	1878	2066	2254	10	10	10	NA	
	SRMI-218	10000	1720	470	587	704	822	939	1057	1174	1291	1409	3	5	5	5
		12000	1730	563	704	845	986	1127	1268	1409	1550	1690	5	5	7 1/2	7 1/2
14000		1730	657	822	986	1150	1315	1479	1643	1808	1972	7 1/2	7 1/2	7 1/2	7 1/2	
16000		1775	751	939	1127	1315	1503	1690	1878	2066	2254	7 1/2	10	10	10	
18000		1775	845	1057	1268	1479	1690	1902	2113	2324	2536	10	15	15	15	
20000		1800	939	1174	1409	1643	1878	2113	2348	2583	2817	15	15	15	15	
22000		1800	1033	1291	1550	1808	2066	2324	2583	2841	3099	20	20	20	20	
SRMI-222		18000	2730	845	1057	1268	1479	1690	1902	2113	2324	2536	7 1/2	10	10	15
	20000	2730	939	1174	1409	1643	1878	2113	2348	2583	2817	10	10	15	15	
	22000	2780	1033	1291	1550	1808	2066	2324	2583	2841	3099	15	15	15	15	
	24000	2800	1127	1409	1690	1972	2254	2536	2817	3099	3381	15	15	15	20	
	26000	2800	1221	1526	1831	2137	2442	2747	3052	3357	3663	15	20	20	20	
	28000	2850	1315	1643	1972	2301	2630	2958	3287	3616	3944	20	20	25	25	
	30000	2875	1409	1761	2113	2465	2817	3170	3522	3874	4226	25	25	25	NA	
	32000	2900	1503	1878	2254	2630	3005	3381	3757	4132	4508	25	NA	NA	NA	
	SRMI-227	28000	3600	1315	1643	1972	2301	2630	2958	3287	3616	3944	10	15	15	15
		30000	3620	1409	1761	2113	2465	2817	3170	3522	3874	4226	15	15	15	20
35000		3685	1643	2054	2465	2876	3287	3698	4109	4520	4930	15	20	20	25	
40000		3685	1878	2348	2817	3287	3757	4226	4696	5165	5635	20	25	25	25	
45000		3720	2113	2641	3170	3698	4226	4754	5283	5811	6339	25	30	30	30	
50000		3810	2348	2935	3522	4109	4696	5283	5870	6457	7043	40	40	40	40	
55000		3870	2583	3228	3874	4520	5165	5811	6457	7102	7748	40	50	50	50	
60000		3920	2817	3522	4226	4930	5635	6339	7043	7748	8452	50	50	NA	NA	
SRMI-233		40000	5100	1878	2348	2817	3287	3757	4226	4696	5165	5635	15	20	20	20
	45000	5100	2113	2641	3170	3698	4226	4754	5283	5811	6339	20	20	25	25	
	50000	5140	2348	2935	3522	4109	4696	5283	5870	6457	7043	25	25	30	30	
	55000	5200	2583	3228	3874	4520	5165	5811	6457	7102	7748	30	30	40	40	
	60000	5235	2817	3522	4226	4930	5635	6339	7043	7748	8452	40	40	40	40	
	65000	5330	3052	3815	4578	5341	6104	6867	7630	8393	9157	40	40	50	50	
	70000	5330	3287	4109	4930	5752	6574	7396	8217	9039	9861	50	50	50	60	
	75000	5380	3522	4402	5283	6163	7043	7924	8804	9685	10565	60	60	60	CRO	
	SRMI-240	70000	7560	3287	4109	4930	5752	6574	7396	8217	9039	9812	25	30	40	40
80000		7660	3757	4696	5635	6574	7513	8452	9391	10330	11270	40	40	40	50	
90000		7700	4226	5283	6339	7396	8452	9509	10565	11739	12678	40	50	50	60	
100000		7750	4696	5870	7043	8217	9391	10565	11739	12913	14087	60	60	60	75	
110000		7850	5165	6457	7748	9039	10330	11622	12913	14204	15496	75	75	75	100	
120000		7925	5635	7043	8452	9861	11270	12678	14087	15496	19604	100	100	100	CRO	

Design Notes:

1. Use Total Static Pressure column that will overcome total system resistance. Approximate pressure drop for components and accessory items; burner 1/2", Filter (dirty) 1/4", intake hood 1/8", birdscreen 1/8", discharge louver 1/8". Damper resistance may be ignored.
2. NA = Not Available. CRO = Contact Rohner Office

## STANDARD SPRAY MAU CONTROL PANEL



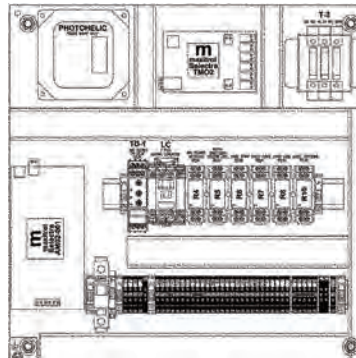
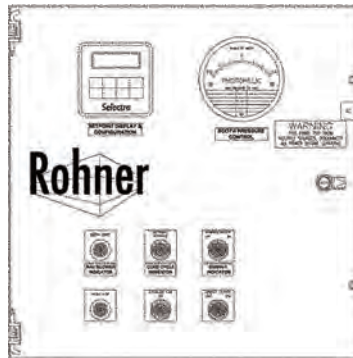
### STANDARD FEATURES

- UL 508 listed / NEMA 12 dust-tight enclosure
- Maxitrol TD94E digital temperature selector
- Maxitrol A1494 amplifier
- Exhaust fan motor starter and overload
- 3-pole 20 AMP lighting contactor with illuminated operator switch
- Illuminated summer/winter selector
- Fire system shut-down interlock jumper
- Door/Spray air solenoid interlock circuit with delay timer

### OPTIONS

- Multiple booth interlocks
- Automatic booth pressure control, exhaust fan VFD and panel-mounted photohelic
- VFD 50% building pressure control
- Recycle 80/20 building pressure control
- Clogged filter indicator
- Low temperature shut-down
- Hour service meter
- Energy saver stand-by recycle mode

## DELUXE SPRAY/BAKE MAU CONTROL PANEL



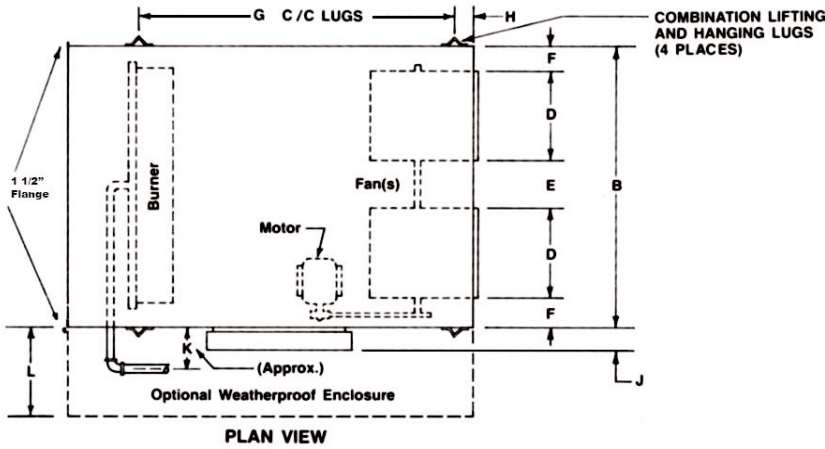
### STANDARD FEATURES

- UL 508 listed/ NEMA 12 dust-tight enclosure
- Maxitrol (MP2) TDM02 programmable digital process and temperature controller
- Maxitrol AM02 amplifier
- Automatic booth pressure control, exhaust fan VFD and panel-mounted photohelic
- 3-pole 20 AMP lighting contactor with illuminated operator switch
- Illuminated summer/winter selector
- Fire system shut-down interlock jumper
- Door/Spray air solenoid interlock circuit with delay timer

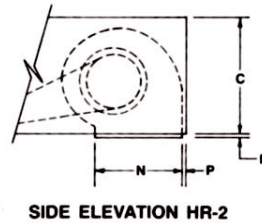
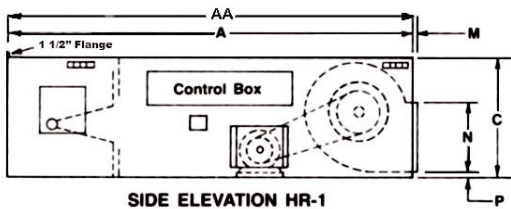
### OPTIONS

- Multiple booth interlocks
- (7) additional process temperature control recipes
- VFD 50% reduced volume bake mode
- 90/10 recycle-bake mode
- Clogged filter indicator
- Low temperature shut-down
- Hour service meter
- Energy saver stand-by recycle mode

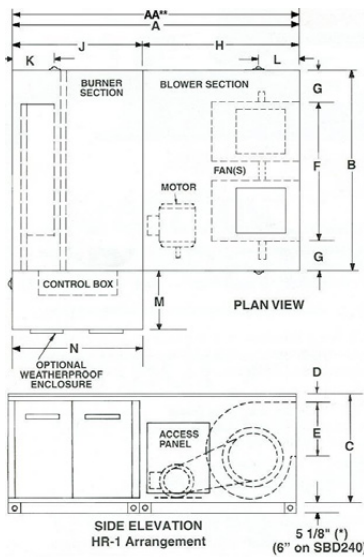
# ROHNER L-SERIES MAKEUP AIR UNITS



LRMI MODELS		
	215	218
AA	-	-
A	84	90
B	60	68 1/8
C	25 5/16	31 1/4
D*	18 5/8	21 7/8
E	11 1/8	12
F	5 13/16	6 3/16
G	67 1/8	70 11/16
H	4 3/4	3 1/2
J	7	7
K	8 1/2	12 1/4
L	22 7/16	22 7/16
M	-	5/8
N	15 7/8	18 7/8
P	1/16	1/8



# ROHNER S-SERIES MAKEUP

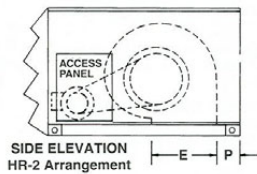


SRMI MODELS															
Size	AA	A	B	C	D	E	F	G	H	J	K	L	M	N	O
215	-	88 1/4	75 3/4	35	2 1/2	18 1/4	55 3/4	9 1/4	48 3/4	40	12 1/2	15 1/4	26	39 3/4	1 1/4
218	-	89 3/4	79 3/4	39	2 1/2	18 3/4	58 3/4	10 3/4	49 3/4	40	12 1/2	12 3/4	26	39 3/4	1 1/4
222	-	107 3/4	96 3/4	49	4	24 3/4	76 3/4	10 3/4	67 3/4	40	-	-	32	39 3/4	1
227	-	123	114 3/4	58	5 3/4	34 3/4	88 3/4	12 3/4	83	40	-	-	32	39 3/4	8
233	-	129 3/4	141	67	4	34 3/4	115	13	89 3/4	40	-	-	32	39 3/4	8
240	-	150	186	80	4 3/4	42 3/4	150 3/4	17 3/4	110	40	-	-	32	39 3/4	8

All dimensions in inches.

### NOTES:

- SRMI-215 through SBD-218 have combination lifting and hanging lugs.
  - SRMI-222, SRMI-227, SRMI-233 and SRMI-240 have channel base frames with combination lifting-hanging lugs.
- (\*) Base channel on SRMI-222, SRMI-227, SRMI-233 and SRMI-240 only.  
 (\*\*) 34" increase in length required per ETL.



## STANDARD OPTIONS

- Horizontal or vertical configuration
- V-Bank pre-filters
- Intake / discharge dampers
- Roof curb
- Vertical stand
- Weatherproof construction
- Recycle / bake damper
- FM approval
- Blower discharge: up, side or down
- Propane or natural gas

## CUSTOMIZABLE OPTIONS

- Custom colors
- VFD 50% building pressure control
- Recycle 80/20 building pressure control
- ESP requirements greater than 1"
- Service platform
- Vibration isolation
- Motors: TEFC, hazardous location or premium efficiency
- Cooling and humidification controls